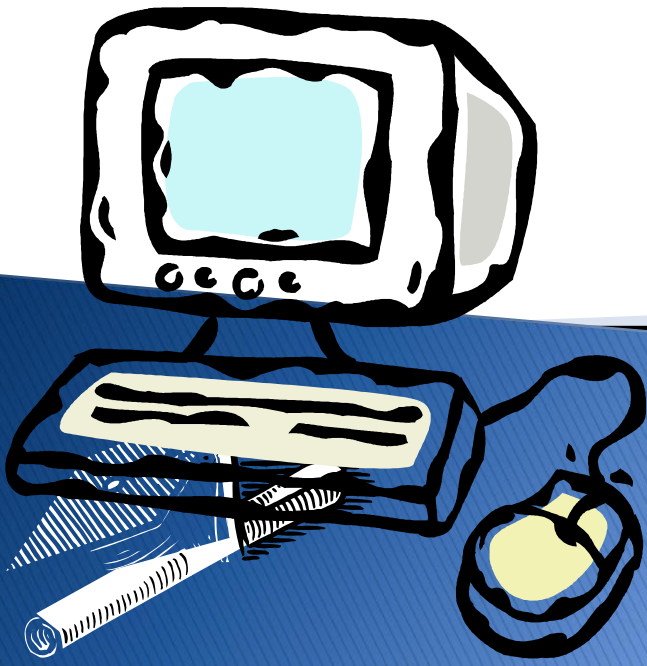


# Performance Based Diploma Academy



# Waterloo Community Schools Performance Based Diploma Academy

- **PBDA** is a special smaller learning community academy for approximately 150 students for students who are at risk of not graduating.
- **PBDA Supports and nurtures:**
  - individual academic progress
  - career skill development
  - social progress
  - positive group dynamics



# Performance Based Diploma Academy –continued

▶ provides an on-site alternative education program

- students who have not reached their potential in the more traditional setting (Carnegie Unit)
- are at risk of dropping out of high school
- for a growing number of students who are bound for post-secondary education, but who – due to a wide variety of personal and familial circumstances – are unexpectedly deficient in credits



# Performance Based Diploma Academy –continued

- Students are identified for **PBD** by teacher/counselor nomination or student preference.



# Performance Based Diploma Academy –continued

*The program has three components:*

## *Academic, Career, and Counseling/Mentoring*

- Academics

- delivered by an on line learning system with a small amount of off line work, i.e. writing a paper.

- Career

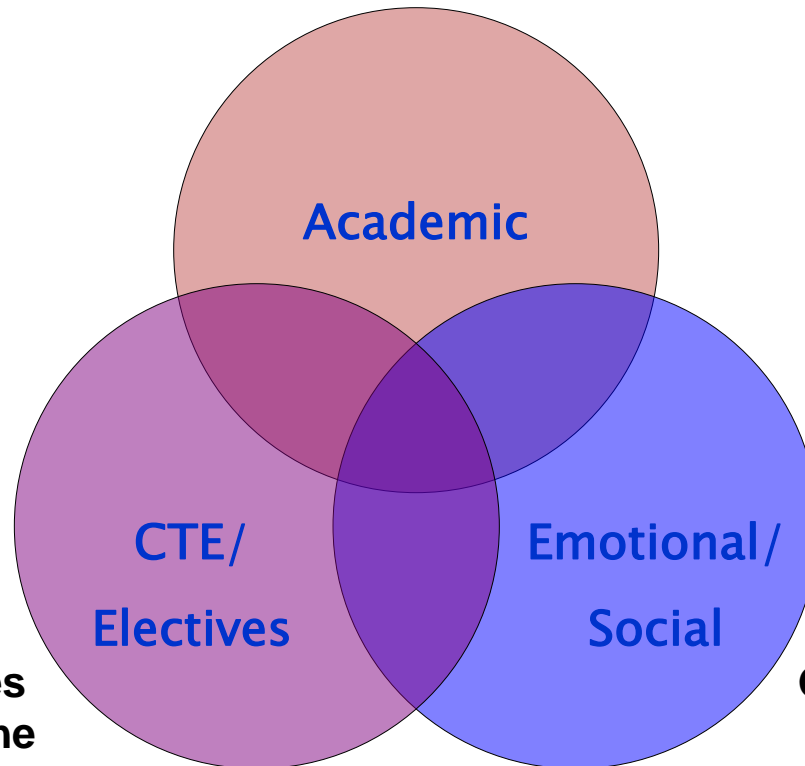
- complete sequence of technical education courses (usually 4 or 5)

- Counseling

- includes group work, mentoring and “soft skills” emphasis

# Performance Based Diploma Academy –continued

English, Math, Science, Social Studies  
On-line with teacher facilitation



Career Tech courses  
and electives with the  
general student population

Group and Individual  
Counseling  
Employability skills

# Performance Based Diploma Academy –continued

- ▶ All students will be awarded a regular Waterloo high school diploma because they will meet the same requirements
- ▶ **PBD** moves away from measuring things like: seat time, homework completion, and student group participation and focuses on MASTERY.
- ▶ **PBD** is not a credit recovery program and is not an easy or quick way for a student to graduate.
- ▶ This is NOT a disciplinary program or for students that are currently expelled.

# Performance Based Diploma Academy –continued

Professionals in each high school:

- one math teacher,
- one social studies teacher,
- one science teacher,
- one language arts teacher,
- a (teacher) program coordinator and
- a counselor skilled in therapeutic group counseling.
- There will also be an administrator assigned to the **PBDA**.





# Performance Based Diploma Academy

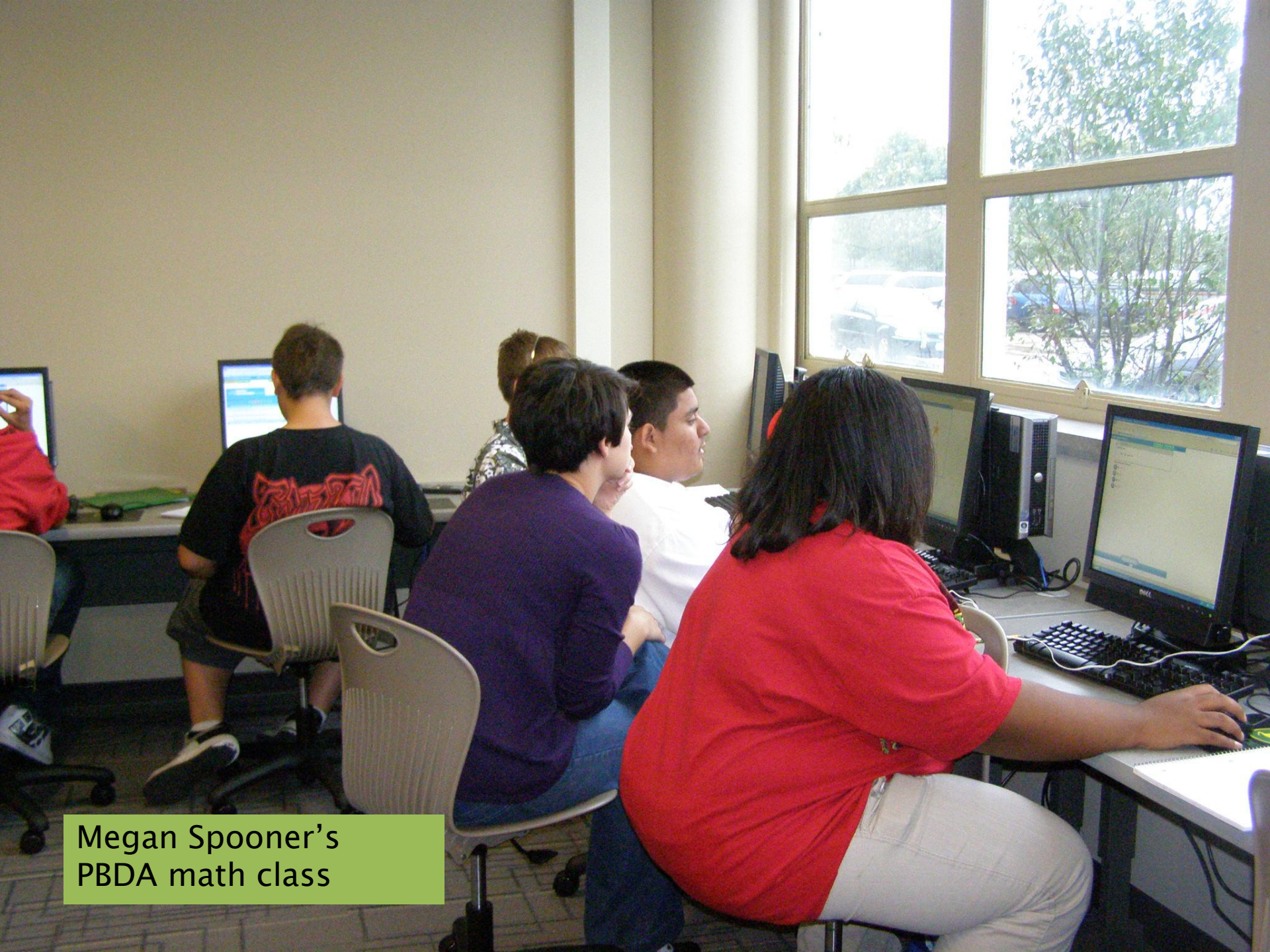
-continued

- 5 to 6 classrooms have been identified at each high school and configured in a self-contained, suite-like arrangement.
- The core area rooms are outfitted as computer labs. The science room science lab space.
- The counseling area is furnished to promote group discussions divided into an office area for the coordinator and counselor.



Dr. Norris, UNI  
President Allen  
and Provost  
Gibson visit East  
High PBDA

10-1-09



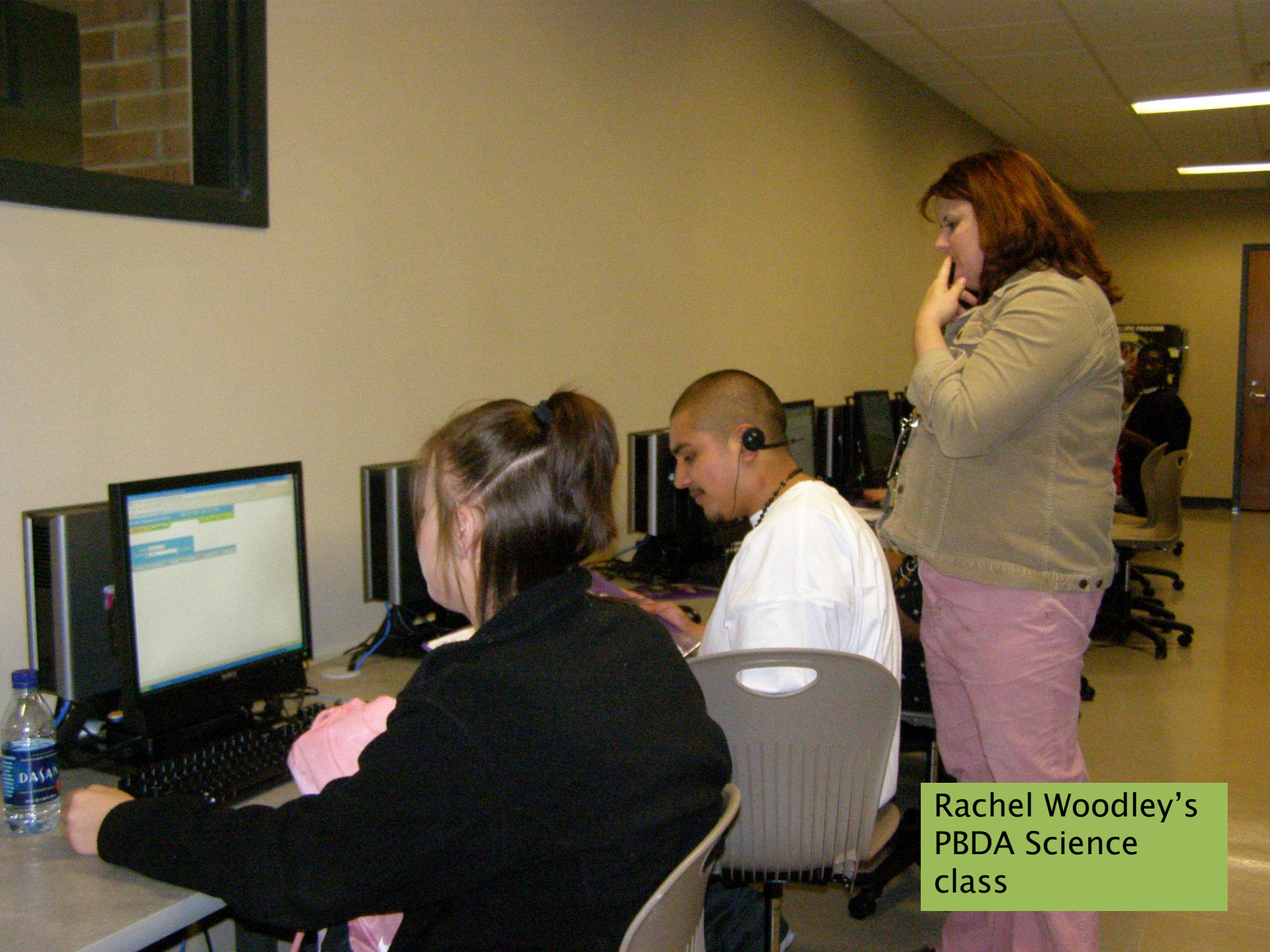
Megan Spooner's  
PBDA math class



Amy Flodeen's  
PBDA English  
class



Justin Little's  
PBDA Social  
Studies class



Rachel Woodley's  
PBDA Science  
class



# Performance Based Diploma Academy

